

STUDY OVERVIEW

Mind Star Research is conducting an observational study to document how qualitative and quantitative results of urine drug screens affect patient plans of care.

We would like to invite you to participate in this study as a Principal Investigator. This is NOT a clinical trial or a double-blind study.

OBSERVATIONAL STUDY PROTOCOL

Clinical Researcher Experience Assessment Documenting Usage and Plan of Care Changes Due to Drug Screenings ©

Protocol Number: PAS1459

NEIRB#: WO 1-701-1

Initial Version Date: July. 26, 2015

Study product: Observational Study

PRINCIPAL INVESTIGATOR CRITERIA

- Must be a Medical Practitioner:
- Medical Doctor (MD) • Doctor of Osteopathic (DO) • Physician Assistant (PA)
- Advanced Practice Registered Nurse (APRN) • Nurse Practitioner (NP)

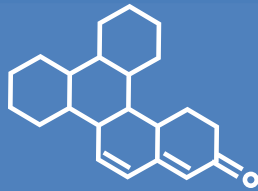
DATA POINT COLLECTION CRITERIA

- Patients requiring qualitative and quantitative urine drug screening.
- Male or Female, ages 18 – 64
- Must have insurance coverage for laboratory testing
- No Federally funded insurance plans



MIND STAR
RESEARCH

Toxicology Study Invitation



STUDY COMPENSATION AND RECOGNITION

- 48 States *Excluding California and New York
- Study length 36 months
- Compensation based on Third Party Fair Market Value assessment
- All Principal investigators are invited to be referenced in the Research Journals
- Study is registered with Institutional Review Boards (IRB)
- Study is pending acceptance to www.clinicaltrials.gov

CLINICALTRIALS.GOV

A service of the U.S. National Institutes of Health

ClinicalTrials.gov is a registry and results database of publicly and privately supported clinical studies of human participants conducted around the world.

Currently lists studies with locations in 50 States and 193 Countries

THE FORMAT OF THE STUDY IS SIMPLE:

1 ENROLL AS A PRINCIPAL INVESTIGATOR

We are available 24/7 to answer any questions.

2 SUBMIT A DAILY /WEEKLY SOURCE DOCUMENT

Fill out Daily/weekly Source Document and fax to Mind Star Research.

3 SUBMIT QUARTERLY CASE REPORT FORM

Document the previous quarters' data collection.

4 REPEAT

Repeat until you receive protocols for the next phase.

I am here to help! Please let me know if you have any questions or if you are ready to enroll as a Principal Investigator. We look forward to working with you!

Mind Star Research
Phone: 844-365-2264
recruiter@mindstarresearch.com